

# RelyX™ Fiber Post

Glass Fiber Post

# RelyX™ Unicem 2 Automix

Self-Adhesive Resin Cement

# RelyX™ Unicem

Self-Adhesive Resin Cement



An easy system for cementing posts  
with **reliable results**

# Easy. Reliable.

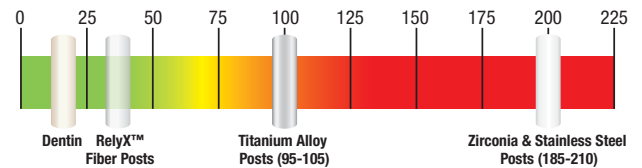
**RelyX™ Fiber Post is designed to make excellent clinical results easy to achieve.**

## Why switch from metal to fiber posts?

Clinical research, noted in the graph at the right, verifies how much more similar the elasticity of RelyX Fiber Post is to human dentin than is the elasticity of metal and ceramic posts – which means a much lower risk of root fracture due to the “wedge effect.”

If endodontic retreatment is required, it’s reassuring to know RelyX Fiber Posts can be removed easily, without damaging the tooth.

**Elasticity Modulus (GPa) of Dentin and Post Materials**

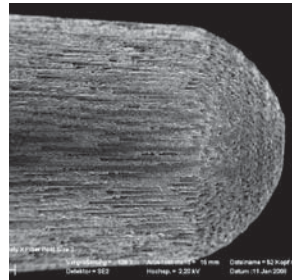


Source: 3M internal data & Materials Science And Engineering. An Introduction. 5th Ed., Wiley.

## Why choose RelyX Fiber Posts?

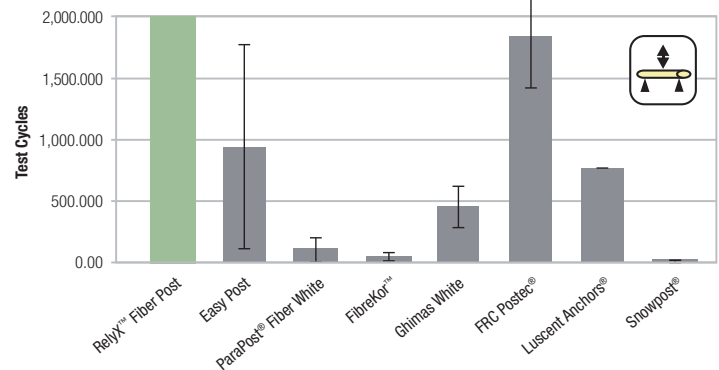
### Strong and long-lasting.

RelyX Fiber Post’s unique resin composition and equally dispersed parallel fibers lead to superior mechanical strength. The microporous surface allows for additional bond strength through microretentive effects.



SEM photo shows fibers and microporous surface.  
Source: 3M ESPE internal data

**Fatigue Test**



Only RelyX™ Fiber Post showed no failures after 2 million cycles in the fatigue test (three-point bending cycles until fracture, depicted is the statistical average from tests on 10 posts).

Source: Prof. M. Ferrari, University of Siena, Italy

### Translucent and radiopaque.

The excellent light translucency of RelyX Fiber Post permits efficient light cure deep into the root canal. Its improved radiopacity is among the highest of available glass fiber posts.



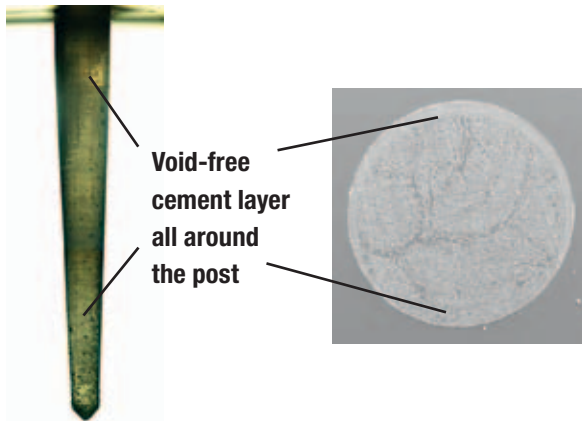
Light translucency of RelyX™ Fiber Post (size #2) here with the Elipar™ FreeLight 2 LED Curing Light.  
Source: 3M ESPE internal data



The improved radiopacity of RelyX™ Fiber Post (size #2 shown) helps with future diagnosis.  
Source: 3M ESPE internal data

## The RelyX™ Unicem system makes cementing a post fast, easy and reliable.

The RelyX Unicem 2 Automix cement combined with its endo tip is designed to reach into the root canal, so you can apply cement in the canal from bottom to top. This greatly reduces the chance of air pockets and voids, resulting in outstandingly strong and virtually void-free post cementation. Convenience and reliability ... without compromise.

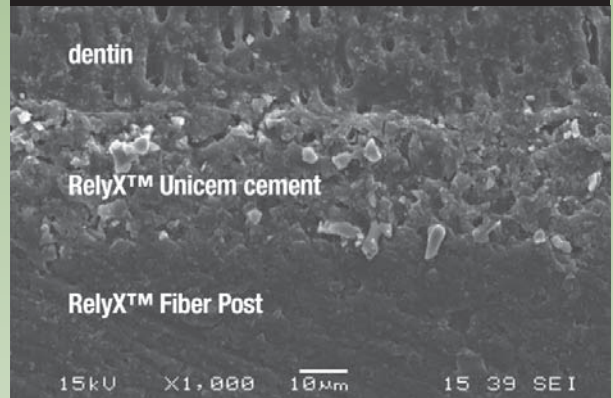


The method of cement application determines the number of voids. Light microscopy and SEM images (cross section) of a simulated root canal filling in an acrylic glass test device.  
 Source: Watzke R., Frankenberger R., Naumann M.; Probability of interface imperfections within SEM cross-sections of adhesively luted GFP. DentMater. 2009 Oct; 25(10): 1256-63

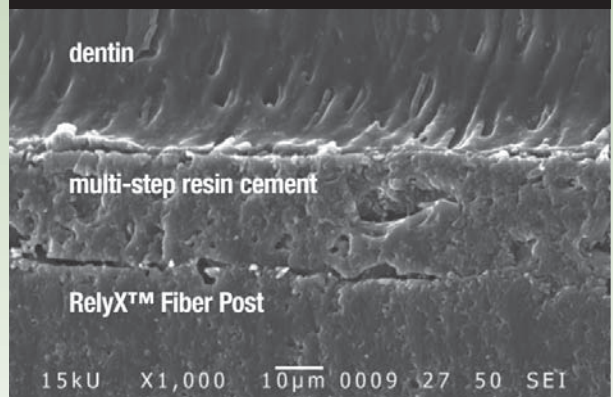
## An enhanced solution that delivers clinical results.

The combination of a strong post with a dentin like flex and a convenient delivery helps ensure the clinical success of post placement.

### Post placement using RelyX™ Unicem Cement



### Post placement using multistep resin cement

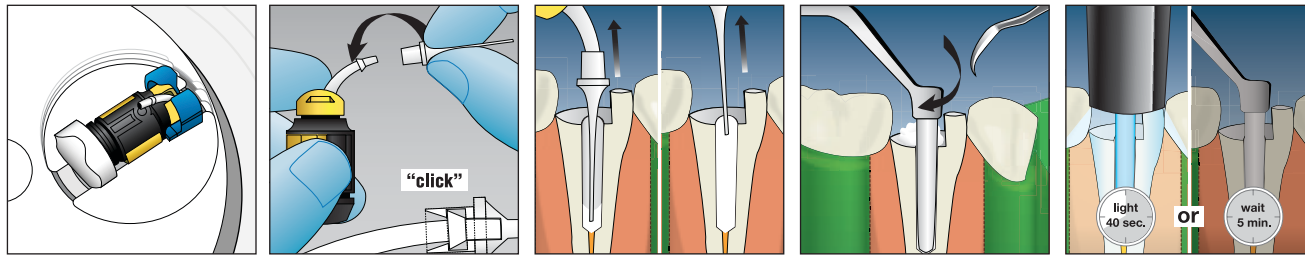


SEM images showing the sealing capability of RelyX™ Unicem Self-Adhesive Universal Resin Cement to RelyX™ Fiber Post, as compared to the sealing capability of a multi-step resin cement. The void-free application deep in the root canal and the lack of technique-sensitive bonding/priming steps promotes an optimal bond and seal between interfaces.  
 Source: 3M ESPE internal data



# Our post and cement make it stronger. Our system makes it easy.

RelyX™ Fiber Post is a strong, yet simple solution for cementing posts.



**First, prepare canal for post placement procedure.**

1. Activate the RelyX™ Unicem Cement Aplicap™ Capsule and mix for **10 seconds** in the RotoMix™ Capsule Mixing Unit from 3M ESPE – or **15 seconds** at highest speed in other units.
2. Attach the RelyX™ Unicem Aplicap™ Elongation Tip to the applicator. Listen for an audible “click.”
3. Apply cement in the root canal from bottom to top. **Keep tip immersed** in the cement initially, and then during the entire cementation process, to avoid trapped air.
4. Seat post immediately. Twist slightly and apply moderate pressure to hold in position. Remove excess cement with a scaler or explorer before complete setting of the cement. **OR** tack-cure for **2 seconds** then remove excess cement.
5. Light cure for **40 seconds** **OR** allow to self-cure for 5 minutes.

## Ordering Information

Item #	Product Information
<b>RelyX™ Fiber Post / RelyX™ Unicem and Unicem 2 Automix Cement</b>	
56860	<b>RelyX™ Fiber Post Intro Kit:</b> 5 posts of each size: 1 (1.3 mm dia), 2 (1.6 mm dia), 3 (1.9 mm dia); 4 drills sizes: 1, 2, 3, Universal; 20 Elongation Tips
56850	<b>RelyX™ Fiber Post/RelyX™ Unicem 2 Automix Starter Kit, shade A2 Universal:</b> 1 – 8.5 g syringes; 7 mixing tips (regular); 15 mixing tips (wide); 15 endo tips; 5 intra-oral tips; RelyX™ Fiber Posts 5 of each size: 0 (1.1 mm dia), 1 (1.3 mm dia), 2 (1.6 mm dia), 3 (1.9 mm dia); 5 drills sizes: 0, 1, 2, 3, Universal
56868	<b>RelyX™ Fiber Post/RelyX™ Unicem Cement Combination Kit:</b> 5 posts of each size: 1 (1.3mm dia.), 2 (1.6mm dia.) 3 (1.9mm dia.); 4 drill sizes: 1, 2, 3, Universal; 20 Elongation Tips; Instructions; Technique Card PLUS RelyX™ Unicem Cement Trial Kit, including 20 capsules (assorted); 1 Aplicap™ Activator/Applier Set; Instructions; Technique Card
56829	<b>RelyX™ Unicem Self-Adhesive Universal Resin Cement Trial Kit:</b> 20 Aplicap™ Capsules in assorted shades (10 – A2 Universal, 6 – Translucent, 4 – A3 Opaque); 1 Aplicap Activator/Applier Set; Instructions; Technique Card
<b>RelyX™ Unicem Cement Aplicap™ Capsule Refills</b>	
56815	<b>RelyX™ Unicem Cement Aplicap™ Capsule Refills — Assorted</b> 50 Aplicap Capsules in assorted shades (24 – A2 Universal, 16 – Translucent, 10 – A3 Opaque)
<b>RelyX™ Unicem Aplicap™ Elongation Tips</b>	
77550	<b>RelyX™ Unicem Aplicap™ Elongation Tips</b> 10 – Elongation Tips for use with RelyX Unicem Aplicap Capsules

Item #	Product Information
<b>RelyX™ Fiber Post Refills and Drills</b>	
56872	10 – RelyX™ Fiber Posts, white, size 0 (1.1 mm dia); 10 Elongation Tips
56861	10 – RelyX™ Fiber Posts, yellow, size 1 (1.3 mm dia); 10 Elongation Tips
56862	10 – RelyX™ Fiber Posts, red, size 2 (1.6 mm dia); 10 Elongation Tips
56863	10 – RelyX™ Fiber Posts, blue, size 3 (1.9 mm dia); 10 Elongation Tips
56873	1 – drill size 0, white (1.1 mm dia)
56864	1 – drill size 1, yellow (1.3 mm dia)
56865	1 – drill size 2, red (1.6 mm dia)
56866	1 – drill size 3, blue (1.9 mm dia)
56867	1 universal drill
<b>RelyX™ Unicem 2 Automix Refills</b>	
56848	<b>Shade Translucent:</b> 1 – 8.5 g syringes; 15 mixing tips (regular); 5 mixing tips (wide); 5 endo tips
56846	<b>Shade A2 Universal:</b> 1 – 8.5 g syringes; 15 mixing tips (regular); 5 mixing tips (wide); 5 endo tips
56847	<b>Shade A3 Opaque:</b> 1 – 8.5 g syringes; 15 mixing tips (regular); 5 mixing tips (wide); 5 endo tips
<b>RelyX™ Unicem 2 Automix Mix Tips</b>	
56856	20 Mixing tips (wide)
56855	15 Endo tips

Customer Care Center: 1-800-634-2249 [www.3MESPE.com/RelyxFiberPost](http://www.3MESPE.com/RelyxFiberPost)

**3M ESPE**

### Dental Products

3M Center  
Building 275-2SE-03  
St. Paul, MN 55144-1000  
U.S.A.  
1-800-634-2249

### 3M Canada

Post Office Box 5757  
London, Ontario N6A 4T1  
Canada  
1-888-363-3685

Please recycle. Printed in U.S.A.  
© 3M 2010. All rights reserved.  
70-2013-0115-0

3M, ESPE, Aplicap, Elipar, RelyX and RotoMix are trademarks of 3M or 3M ESPE AG. Used under license in Canada. Easy Post, FibreKor, FRC Postec, Ghimas White, Luscent Anchors, ParaPost and Snowpost are not trademarks of 3M.